

SINGLE CABLE/SEED STITCH TEMPLATE

How to convert a 24 stitch Magic Cables pattern to an 18 stitch pattern for use with the MK-70

I think the easiest way to change a 24 stitch Magic Cables pattern to an 18 stitch pattern is to keep the cable portion as is, and reduce the border and possibly the seed stitch sections. In the blanket I made, I only needed to reduce the borders to reach 18 stitches. I kept the cable section and seed stitch sections as is. I modified Pattern 903 from the Magic Cables Bulky Collection.

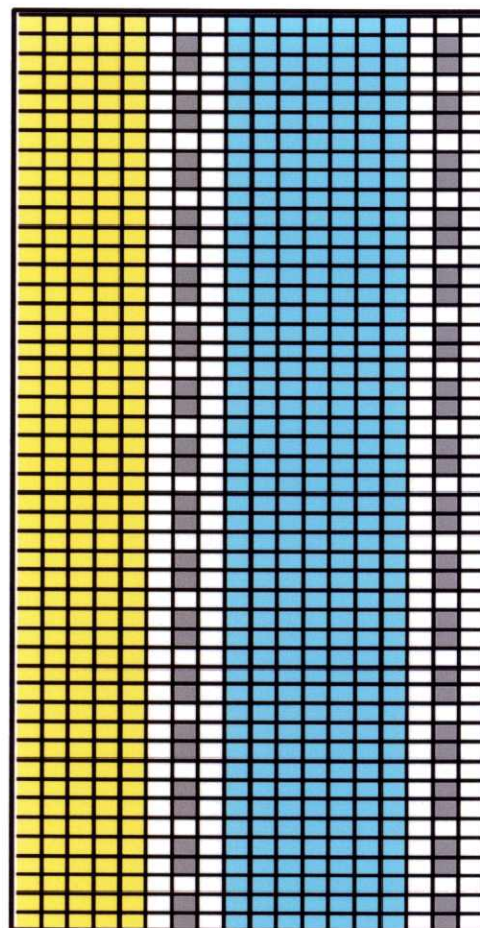
Use the template to the right, or use graph paper. If using graph paper, draw a line around an area that is 18 squares wide and 48 squares high.

Find your single cable 24 stitch punchcard pattern in one of the Magic Cables books.

In the **YELLOW** area of the template, color in the squares that represent the cable stitches of the card.

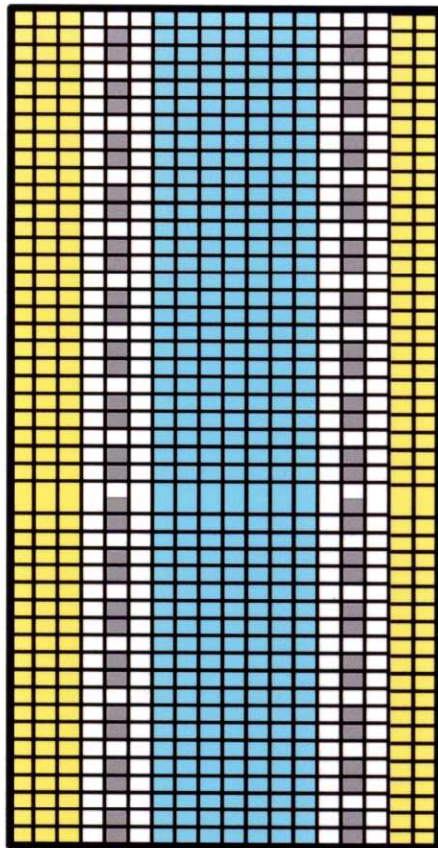
In the **BLUE** section color in the squares that represent the seed stitches.

Before you can punch your card, you must first decide how you want the pattern to 'fit' on the needle bed. If you want to make a single panel blanket as I did, then position the pattern on the card as shown on the next page. This is your 18 stitch pattern. When punching your card: punch a hole in all areas that remain white, yellow or blue (if you used graph paper, punch holes in all the squares that are not penciled in. These are the stitches that will knit. The unpunched areas of your card should correspond with the gray squares and the squares you colored in with a pen or pencil.



Color Key

-  stitch area for single cable design
-  stitch area for seed stitch design
-  tuck stitches
-  unpatterned areas - these will knit



If your card is punched with the cable pattern in the YELLOW area and the seed stitch pattern in BLUE as laid out above, you can cast on needles L76 to R77 and knit a single panel blanket.

In knitting the afghan, the first 40 and last 40 rows are knit in seed stitch to create the border along the top and bottom. You will need a 2nd card punched in seed stitch for that. There is one in the photo album 'Evelyn' (modified from a Stitch World pattern) which will line up with the above card when used together.
(Remember to pull the end needles to D on every row)